



Simple Connections



Modular Construction

## AluFix

Lightweight hand-set formwork system

## High flexibility meets low weight

Combining exceptional durability, versatility and performance with low weight, AluFix makes light work of tough wall-, slab- and foundation-forming tasks on refurbishment, landscaping and other contracts. The crane-independent hand-set formwork offers outstanding customer value.

### A system for walls and slabs

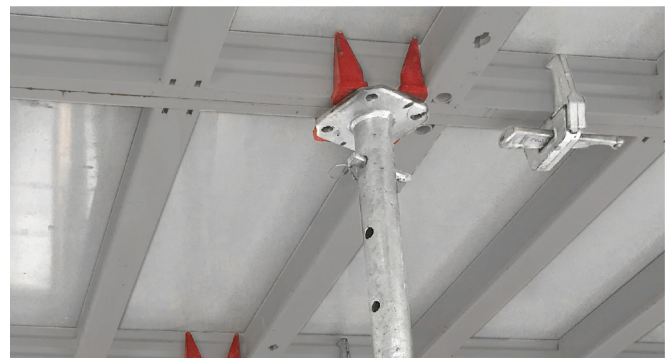
The range of applications served by this smart system can be extended to include slabs. The use of identical components for both wall and slab formwork simplifies site logistics and inventory management.





## High-performance slab formwork

Simply by fitting AluFix prop heads to the EuMax props and securing them with the 14/90e pin, the AluFix system is transformed into high-performance slab formwork for up to 460mm thick slabs.



## Architecture & landscaping

Low panel weight, straightforward application with only a few components and rapid assembly make AluFix the ideal formwork solution for garden and landscaping contracts.



## Efficient shuttering

Intelligent height increments allow efficient shuttering of up to 3500mm high walls with no vertical extension. The finely graduated range of panel sizes caters for numerous layouts – with a minimum number of filler areas and problem-free corner solutions.



## Fundamentally smart

Even under spatial constraints, AluFix is easy to align and safe to carry by hand thanks to its ergonomic grip profiles. The system is also ideal for use as stop-end formwork to ground slabs and foundations, even on sites with complex geometries.





## Uncompromising formwork performance

AluFix is the product of choice for crane-free assemblies that have to deliver top-class results. The wide range of panel sizes is ideal for accommodating the various requirements and applications encountered across the globe.

### Applications:

- Residential schemes
- Commercial schemes
- Civil engineering projects
- Municipal and infrastructure schemes
- Garden architecture and landscaping

	Panel width (mm)						Corner panels				Fillers	
	900	750	550	450	400	250	IC	OC	HIC	HOC	SC	FS
Heights (mm)												
3500	•	•	•	•	•	•	•	•			•	•
3000	•	•	•	•	•	•	•	•			•	•
2700	•	•	•	•	•	•	•	•			•	•
2500	•	•	•	•	•	•	•	•			•	•
1500	•	•	•	•	•	•	•	•	•	•	•	•
1350	•	•	•	•	•	•	•	•	•	•	•	•

IC Inside corner, side length 200mm

OC Outside corner

HIC Hinged inside corner, side length 300mm

HIOC Hinged outside corner, side length 75mm

SC Stripping corner, side length 250mm

FS Filler strip 50mm (alkus)

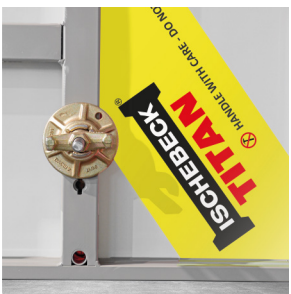
# Simply smart

- Panel heights 350, 300, 270, 250, 150 and 135cm and only six panel widths for problem-free corner solutions with any wall thickness
- Permissible fresh concrete pressure (DIN 18218) over full surface of up to 56 kN/m<sup>2</sup> (flatness tolerances to DIN 18202)
- Ideally suited for a diversity of functions
- Great for refurbishment projects
- Crane-independant
- Closed hollow aluminium profile
- Ergonomic grip profile
- Robust frame construction
- High-grade powder-coated finish
- Impact and scratch resistant surface
- Easy to clean
- Smart multi-function profile
- Features welded-in Dywidag nuts
- All accessories attached with flange screw
- Assembly lock for structurally continuous connections with only a few hammer blows
- High-quality alkus all-plastic facing with 7 year warranty



## Dry ties

The top ties can be simply replaced by the claws 23, flange nuts and the D22 plastic tube as a spacer.



## Internal tie holes

The 900mm and 750mm wide panels are provided with additional internal tie holes, set back from the edge by around 200mm, that allow tying without obstruction by waterstops and simplify the shuttering of foundations.

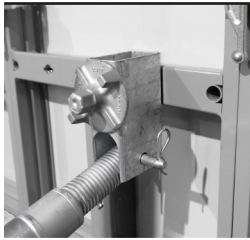


## Tie free

250 to 550mm wide AluFix panels enable foundations and small walls to be quickly and easily cast without conventional tying components. This is achieved through the use of foundation tape connected to the panels by foundation tensioners. The formwork assembly is dry-tied at the top using the tie claw 23.

# A wall full of ideas

Ischebeck Titan systems excel thanks to their supreme standards of quality, efficiency and practical detailing and the lightweight AluFix hand-set formwork is no exception. With standardised system components, a minimum of accessories and a closely tailored range of panel sizes, it combines all the features that make Ischebeck systems the unbeatable solution for practical on-site operations. Its compatibility with EcoAs allows the flexible use of formwork inventory, for existing customers.



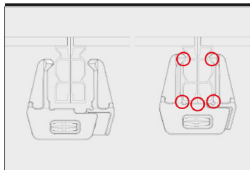
## Flange screw

A single component for strongly connecting all accessories



## Multi-function profile

Made from closed hollow aluminium profiles with welded-in DW 15 nuts for rapid, structurally continuous connection of accessories



## Closed hollow profile

For high stability and long service life



## High-grade powder coated finish

Facilitates cleaning and reduces concrete adhesion



## Internal tie holes

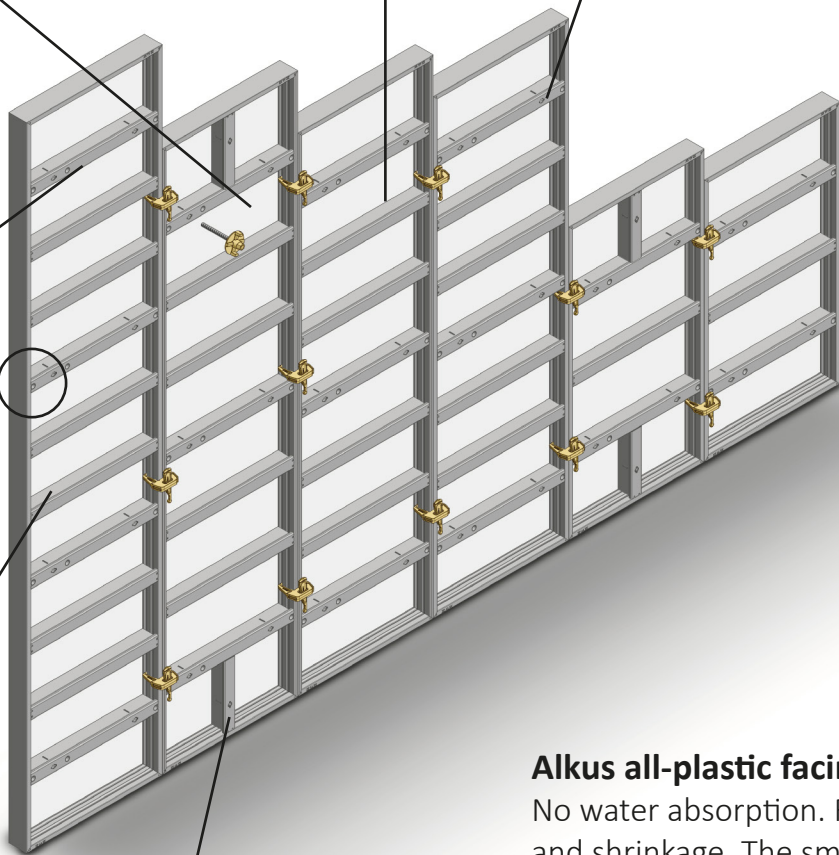
Simplify shuttering of foundations

### **Ergonomic grip profile**

Made from stable, closed hollow aluminium profile for safe handling

### **Tie hole**

With a conical anchor sleeve welded in from both sides



### **Alkus all-plastic facing**

No water absorption. Resistant to swelling and shrinkage. The smooth, robust surface guarantees a high-quality concrete finish, even after numerous applications

### **EA assembly lock**

Only one component is needed for rapid, reliable panel connections: the EA assembly lock. Allows single-handed fitting at any position along frame. A few hammer blows suffice to achieve strong, level, stepless panel connections.

## Long lasting and economical

The AluFix lightweight hand-set formwork outperforms all other crane-independent systems in terms of economy, longevity and sustainability. While plastic formwork offers a maximum service life of ten years, AluFix is not limited by any "best before" date. The robust frame construction and facing can effortlessly withstand much longer periods of regular use. Its constituent materials are resistant to corrosion and environmental influences such as UV radiation and temperature fluctuations.

The low weight of the aluminium panels, which are lighter than comparable plastic formwork, guarantees non-strenuous working. Operatives need to fit far fewer connectors and tying components. On-site inventory and work effort are reduced, progress on site speeded up and job safety improved.

AluFix is mainly manufactured from recycled aluminium and, after its long service life, can be handed over for renewed recycling. Moreover, considerable time and resources are saved on cleaning the formwork due to its reduced concrete adhesion and closed hollow frame profiles.





## Recyclable and resource-efficient

AluFix requires 50% fewer connectors and 25% fewer tying components than plastic formwork. This reduces on-site inventory and streamlines work operations.



AluFix is mainly produced from recycled aluminium and, after its long service life, can be returned for renewed recycling.



The alku facing guarantees high planning and investment security while meeting the highest fair-faced concrete requirements.



Less effort cleaning means lower labour costs and reduced resource consumption.



## **FRIEDR. ISCHEBECK GMBH**

Founded in Germany over 130 years ago, Ischebeck is one of the world's principal manufacturers of formwork and falsework systems. Renowned internationally for its Titan Support system, the group has a long standing tradition of innovation and engineering excellence. Product quality is a hallmark of the group and the company's manufacturing facilities are amongst the most advanced of their type.

## **Ischebeck Titan Limited**

Ischebeck Titan is a leading supplier of formwork, falsework, safety systems and ground engineering solutions. The company operates from headquarters centrally located in the heart of the U.K and has a team of product specialists ready to assist you with your concrete construction project.

## **Product Availability**

Substantial stocks of equipment are available ex-stock from the company's strategically located 4-acre distribution site with most items available nationwide on a 48 hour delivery.

Product are available for both hire and outright purchase.

## **Technical support**

Backed by the resources of one of the most respected names in the industry, Ischebeck Titan offers a comprehensive range of support services.

The company's Technical Services Division can provide a full drawing and structural analysis service using the latest computerised software.

Since our policy is one of continuous improvement we reserve the right to change without prior notice the specifications and methods of construction mentioned in this document. No responsibility whatsoever can be accepted for any errors or omissions in, or misinterpretation of the contents. Products must be used in conformity with safe practices and applicable codes and regulations. Photos and details shown are for general guidance only and may vary according to circumstances. For specific information refer to Ischebeck Titan Limited. Copyright reserved.

**HEAD OFFICE:** Ischebeck House, Wellington Road, Burton Upon Trent, DE14 2AP  
Tel: +44 (0) 1283 515677 Email: [sales@ischebeck-titan.co.uk](mailto:sales@ischebeck-titan.co.uk)

**DESIGN OFFICE:** Hollinwood Business Centre, Albert Mills, Albert Street, Hollinwood, Oldham, OL8 3QP  
Tel: +44 (0)161 682 4732 Email: [technicalsupport@ischebeck-titan.co.uk](mailto:technicalsupport@ischebeck-titan.co.uk)

[www.ischebeck-titan.co.uk](http://www.ischebeck-titan.co.uk)

