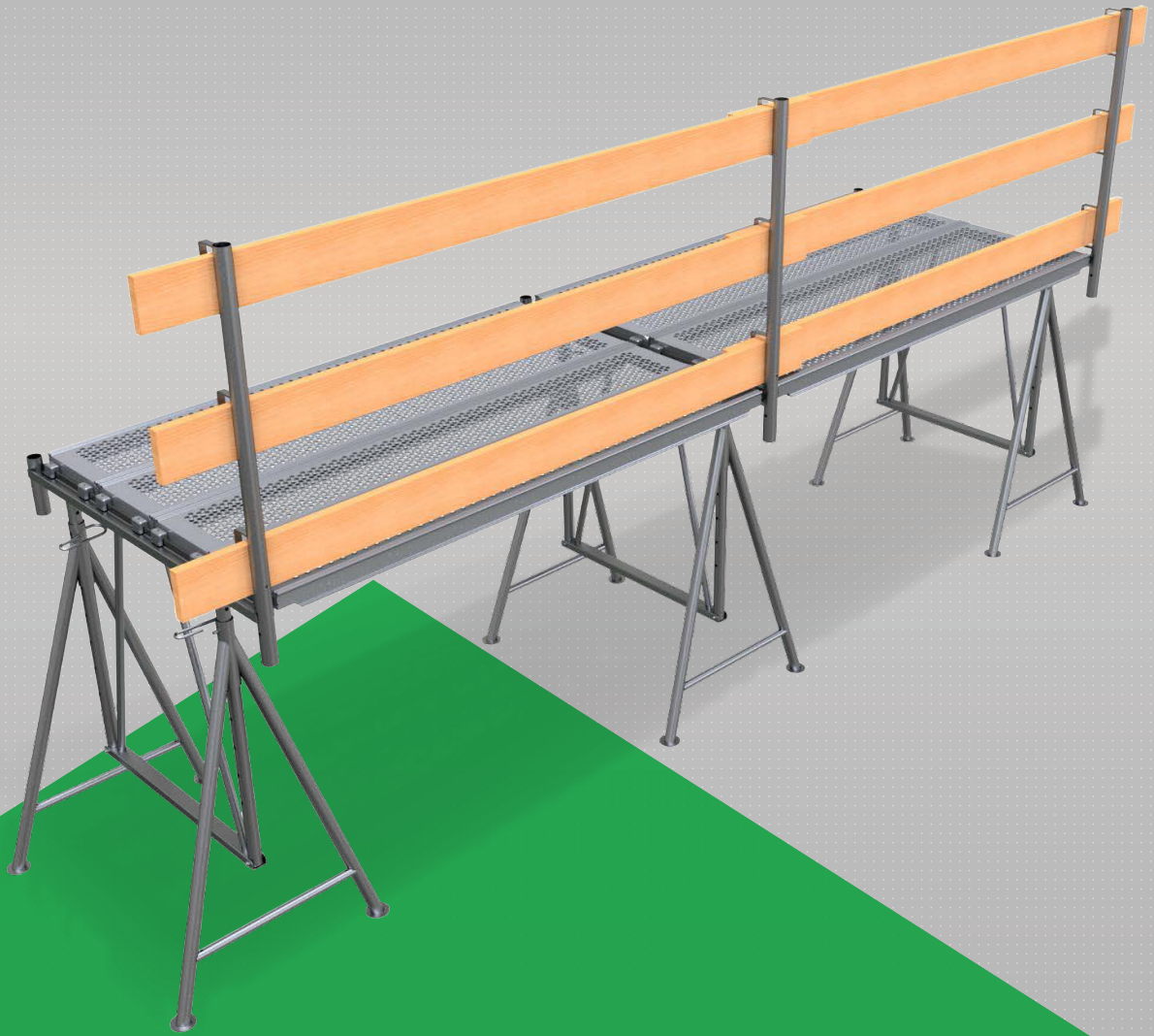




WESTPORT
EQUIPMENT

Technical User Guide



FOLDING SCAFFOLD TRESTLE SYSTEM FS 1200

Access | Shoring | Safety



Scan for
more info

FOLDING SCAFFOLD TRESTLE SYSTEM FS 1200

This Trestle System provides a safe working at height platform for users, combining a double Guardrail system on both sides if required.

The trestle boasts an unrivalled load class rating of 6 used in conjunction with Layher steel decks. Timber boards can also be used as per standard trestle systems



Technical Data Scaffold Trestle System S 1200

Load capacity: 1500kg

Surface: hot-dip galvanized nach DIN EN ISO 1461



Item no.	Dimensions BxH:	Weight
10123FS	1.20m x 1.20m - 1.95m	29 kg

Required load-bearing capacity in kilograms per skeleton frame depending on the load class, the decking width and the distance between the skeleton frames

Load class	Lining width m	Spacing of the trestles								
		0.80m	1.00m	1.25m	1.50m	1.75m	2.00m	2.25m	2.50m	2.75m
1-3	0.60	138	173	216	259	302	345	388	431	474
1-3	0.90	207	259	323	288	453	518	582	647	712
4		297	371	464	557	650	743	835	928	1021
5		432	540	675	810	945	1080	1215	1350	1485
6	567	709	886	1063	1240	1418	1595	1772	1949	
1-3	1.00	230	288	359	431	503	575	647	719	791
4		330	413	516	619	722	825	928	1031	1134
5		480	600	750	900	1050	1200	1350	1500	1650
6	630	788	984	1181	1378	1575	1772	1969	2166	
1-3	1.20	276	345	431	518	604	690	776	863	949
4		396	495	619	743	866	990	1114	1238	1361
5		576	720	900	1083	1260	1440	1620	1800	1980
6	756	945	1181	1413	1654	1890	2126	2363	2599	
1-3	1.50	345	431	539	647	755	863	970	1078	1186
4		495	619	774	929	1083	1238	1393	1548	1702
5		720	900	1125	1350	1575	1800	2025	2250	2475
6	945	1181	1477	1772	2067	2363	2658	2953	3248	

Load classes of the work scaffold

Load class	Evenly distributed load kN/m ²
1	0.75
2	1.50
3	2.00
4	3.00
5	4.50
6	6.00

GENERAL INFORMATION

System comes with multiple guard rail options using either a double height timber solution or a double height Layher handrail option. Guardrails and timber must be secured against unintentional loosening and tipping.

**Up to 2.0m post spacing:
Scaffold boards from 15 x 3 cm (cross-section).**

**Up to 3.0m post spacing:
Scaffold boards from 20 x 4 cm (cross-section)**

ASSEMBLY INSTRUCTIONS

Handled by competent person under supervision by site foreman/supervisor.

Tool Box Talks can be provided by Westport Equipment.

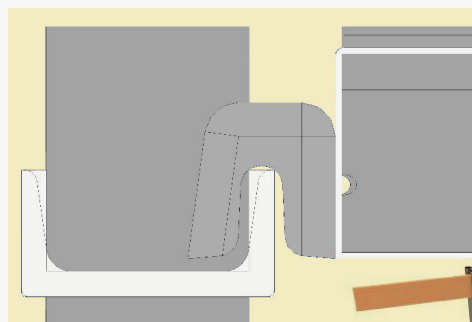
Scaffold trestles must be erected on level, solid, load-bearing and tilt-proof ground. Bricks, boxes or similar objects must not be used as a base.

Visual inspection of all components is prior to assembly. Damaged components must not be used.

Minimum dimensions of scaffolding boards						
Load class	Board / bole width in cm	Board / bole width in cm				
		3.00	3.50	4.00	4.50	5.00
		Permissible support width in m				
1,2,3	20.00	1.25	1.50	1.75	2.25	2.50
	24 and 28	1.25	1.75	2.25	2.50	2.75
4,00	20.00	1.25	1.50	1.75	2.25	2.50
	24 and 28	1.25	1.75	2.00	2.25	2.50
5,00	20, 24, 28	1.25	1.25	1.50	1.75	2.50
6,00	20, 24, 28	1.00	1.25	1.25	1.50	1.75

If risk assessment determined side protection required at lower heights, this must also be fitted at a deck height of less than 2.0m (e.g. when working near/over water surfaces or other liquids, on traffic roads or near slopes, etc.).

The scaffold planks are to be hooked into the scaffold trestles as shown in the figure below. Due to the hole profiling, solid and convenient steel base is extremely slip-resistant and step-secure. Use with wooden planks is also possible.



SUSPENSION SYSTEM FOR THE STEEL PLANKS IN THE TRESTLE

ASSEMBLY EXAMPLE SCAFFOLDING SYSTEM



COMPATIBLE PRODUCTS



Railing post

Item no.	Weight
11277VG	3kg



Corner railing post

Item no.	Weight
11278VG	4kg

Benefits

- flexible system
- randomly expandable
- space-saving storage
- quick assembly



System planks

Item no.	Weight
103125	5kg



Steel system plank

Item no.	Length
103210	1.0m
103215	1.5m
103220	2.0m
103225	2.5m
103230	3.0m

Subject to technical modifications and errors.