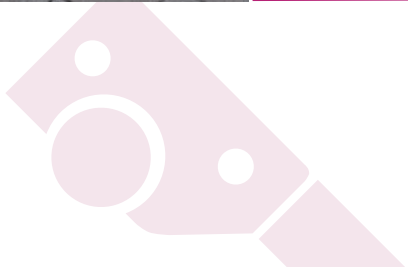


## LAYHER ROLLING TOWERS

ALWAYS SAFE ON THE WAY UP



# LAYHER ROLLING TOWERS

FOR TOP PERFORMANCE AT GREAT HEIGHTS,  
YOU NEED HIGH STABILITY.



Layher rolling towers offer professionals in the building trade and in industry individualised solutions for every task, but without extensive material being needed. Thanks to the modular principle, many assembly variants are possible with a few components. That reduces the need for stocks and cuts logistic costs. The lightweight and handy system components made of aluminium with snap-on claw not only permit quick and easy assembly, but also ensure high stability for concentrated working at a height of nearly 14 meters. Layher rolling towers are a persuasive solution thanks to their ample working platform and working height adjustment. Their adaptability to site conditions enables every professional on the scaffolding to work ergonomically and so improve their individual safety and efficiency.

For top performance at great heights, you need high stability. Layher has, with its consistent approach to safety and quality, designed products which conform to statutory safety requirements. Inspections by independent institutes have corroborated this. The Layher brand stands for more than 70 years of experience in the design and manufacture of rolling towers at the central production location in Güglingen. Quality "Made by Layher" means "Made in Germany".

With its rolling tower family, Layher offers customers from the building trades and from industry scaffolding systems for economical working at any height, both indoors and outdoors.



## YOUR BENEFITS AT A GLANCE

- ▶ Layher offers for every site requirement the rolling tower to match. Thanks to the modular principle, many assembly variants are possible with a few components.
- ▶ The option of using the Layher Safety Assembly P2 enable you to conform to the German Ordinance on Industrial Safety and Health without extra expense.
- ▶ Ergonomic assembly and high profitability thanks to the handy system components made of aluminium.
- ▶ You can rely on maximum quality and safety thanks to a recognised quality management system and inspections by independent institutes.



Manufacturer quality management  
certified according **ISO 9001:2008**

# LAYHER ROLLING TOWERS

FOR TOP PERFORMANCE AT GREAT HEIGHTS, YOU NEED HIGH STABILITY.



## WHEELS

Sturdy wheels for high manoeuvrability and stable stance during work. Various wheel coatings permit use even on sensitive floor coverings. The steel base plates ensure easy and precise height equalisation while transmitting the loads centrally into the locked wheel. This improves the stability, enabling the user to work efficiently.

## LADDER FRAMES

The ladder frame doubles as the scaffolding frame and as an access. The grooves of the rungs ensure maximum slip prevention and secure grip for vertical access.

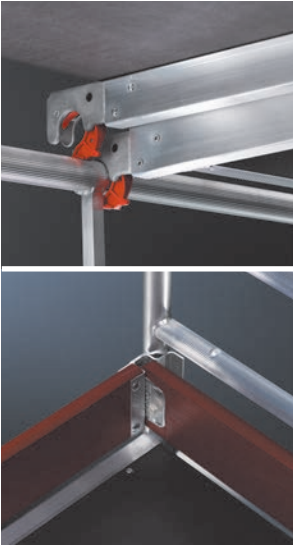
The ladder frames are available in the lengths 1.00 m and 2.00 m and in the widths 0.75 m and 1.50 m.

Long and conical spigots ensure a secure and easy-action connection of the ladder frames to one another, easily made safe by spring clips.



## GUARDRAILS AND DIAGONAL BRACES WITH SNAP-ON CLAWS

Unbeatably fast connection without using tools. A slight pressure, and the claw snaps into place by itself. Various colours of the claw fingers for guardrails and diagonal braces help to tell the components apart – that saves time.



## DECKS

Sturdy decks made from aluminium frames with plywood insert and snap-on claws ensure easy handling.

They have a non-slip surface for a firmer and safer stance even in wet weather. A maximum-size working surface is obtained with a width of 68 cm.

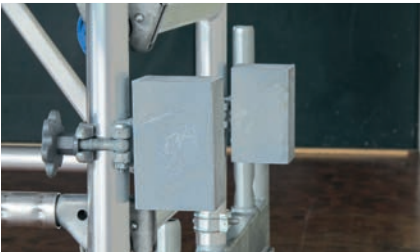
The differently shaped snap-on claws permit easy 1-man assembly and at the same time provide quadruple lift-off prevention.

The toe board for protection from falling material or tools form a self-holding rim to ensure a maximum working surface.

## STABILITY

The stability of the rolling tower must be assured for every phase of its assembly and dismantling. Depending on the assembly height and whether the tower is assembled outdoors or in a closed room, the following measures must be taken:

- ▶ installation of mobile beam
- ▶ use of stabilisers
- ▶ ballasting



# More safety, when using Layher rolling towers

To comply with European industrial safety laws, you as an employer must ensure that your workforce is only provided with equipment that, when used for its intended purpose, guarantees both safety and health protection. Appropriate safety measures have to be taken by you. Collective risk prevention takes precedence here over individual risk prevention.

To comply in full with all requirements, Layher has now devised the new Safety Structure P2. The Layher Safety Structure P2 represents the collective safety measure.

## The New Safety Structure P2

- ▶ Platforms with a vertical spacing of 2 m.
- ▶ Safe design with integrated collective side protection.

Thanks to the platforms assembled with a 2 meter spacing, the rear guardrails can already be fitted from the level below, so that when the next platform up is accessed there is already a simple side protection in place in all sides.



### CAN BE RETROFITTED WITH THE LAYHER MODULAR SYSTEM:

If you already have a Layher rolling tower, you can upgrade it to the P2 design without any problem.

## YOUR BENEFITS AT A GLANCE

### The ingeniously simple assembly principle

- ▶ All round side protection already in place when accessing the next platform up.
- ▶ More stability in the rolling tower thanks to additional stiffeners.

### Platforms spaced 2 meters apart:

- ▶ Maximum safety during assembly, ascent and descent and during the actual work.
- ▶ Easy passing on of rolling tower parts or work materials from one level to the next.

### The innovative Uni assembly hook:

- ▶ Considerably simplifies assembly and ensures fast and hitch-free assembly and dismantling.

# The principle – simple. Faster. Safer.

## 1 Fit the first ladder frame.

Attach the Uni assembly hooks and position the second ladder frame for fitting of the rear guardrails.



## 2 Swing ladder frame with rear guardrail upwards and fit into place.



## 3 Insert diagonal braces and access deck.



## 4 Ascend to next level and install additional rear guardrails at 0.50 m.



Learn more about the safety structure P2  
on YouTube: <http://qrp2de.layher.com>



# Zifa tower P2

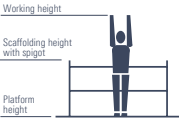
The "ready-made tower" for working at low heights

The Zifa P2 is practically a "ready-made tower" for working at low heights: folded together flat for storage and transport – fold it out, insert the deck. That's all.



## TECHNICAL DATA:

- ▶ Working height: 7.76 m
- ▶ Area of working platform: 0.75 x 1.80 m
- ▶ Permissible live load: 2 kN/m<sup>2</sup> (scaffolding group 3)



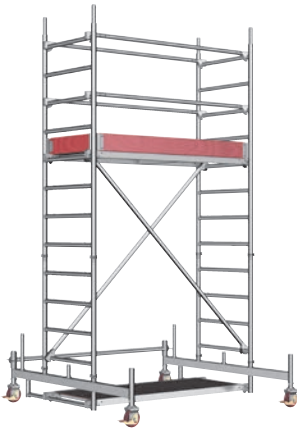
Tower model	Working height [m]	Scaffolding height [m]	Platform height [m]
1406200	2.86	1.83	0.86
1406210	3.61	2.83	1.61
1406213	4.76	3.98	2.76
1406214	5.76	4.98	3.76
1406215	6.76	5.98	4.76
1406216	7.76	6.98	5.76



# Uni Light P2

The practical rolling tower for working in cramped conditions

The Uni Light P2 tower is a compact and lightweight rolling tower for safe and comfortable working wherever you formerly needed a ladder – the standing surface of a full 1.30 m<sup>2</sup> permits unimpeded movement and the carrying of tools and material.

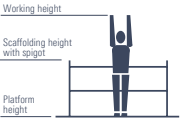


TECHNICAL DATA:

▶ Working height: 9.26 m

▶ Area of working platform: 0.75 x 1.80 m

▶ Permissible live load: 2 kN/m<sup>2</sup> (scaffolding group 3)

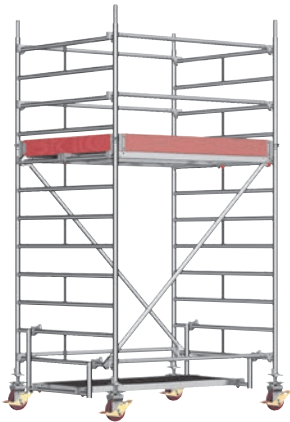


Tower model	Working height [m]	Scaffolding height [m]	Platform height [m]
1403201	3.11	2.33	1.11
1403202	4.26	3.48	2.26
1403203	5.26	4.48	3.26
1403204	6.26	5.48	4.26
1403205	7.26	6.48	5.26
1403206	8.26	7.48	6.26
1403207	9.26	8.48	7.26

# Uni Compact P2

The compact universal tower with double-width working surface

The universal Uni Compact P2 tower with double-width work deck yet with compact basic dimensions – offers ample room for working at heights, even with materials, while still leaving plenty of freedom of movement.

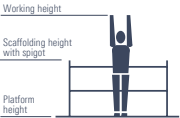


TECHNICAL DATA:

▶ Working height: 10.38 m

▶ Area of working platform: 1.50 x 1.80 m

▶ Permissible live load: 2 kN/m<sup>2</sup> (scaffolding group 3)



Tower model	Working height [m]	Scaffolding height [m]	Platform height [m]
1405001	3.20	2.43	1.20
1405002	4.20	3.43	2.20
1405003	5.20	4.43	3.20
1405004	6.20	5.43	4.20
1405005	7.20	6.43	5.20
1405006	8.38	7.61	6.38
1405007	9.38	8.61	7.38
1405008	10.38	9.61	8.38

# Uni Standard P2

The most flexible rolling tower for very great heights

The Uni Standard P2 – for work on walls and ceilings, on machinery, in technical facilities, factories and warehouses, indoors and outdoors.

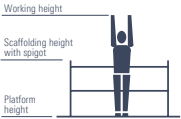
### Convenient access

For even more safety and even more convenient access, the Uni Standard P2 can also be supplied with suspended ladders with wide steps.



### TECHNICAL DATA:

- ▶ Working height: 13.38 m
- ▶ Area of working platform: 0.75 x 2.85 m
- ▶ Permissible live load: 2 kN/m<sup>2</sup> (scaffolding group 3)



Tower model	Working height [m]	Scaffolding height [m]	Platform height [m]
1401101	3.20	2.43	1.20
1401102	4.35	3.58	2.35
1401103	5.35	4.58	3.35
1401104	6.35	5.58	4.35
1401105	7.35	6.58	5.35
1401106	8.35	7.58	6.35
1401107	9.38	8.61	7.38
1401108	10.38	9.61	8.38
1401109	11.38	10.61	9.38
1401110	12.38	11.61	10.38
1401111	13.38	12.61	11.38

# Uni Wide P2

The universal tower for the highest heights with double-width working surface

The Uni Wide P2 universal tower with double-width work deck provides a convenient platform when working at height.

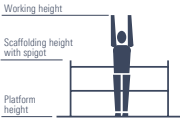
### Convenient access

For even more safety and even more convenient access, the Uni Wide P2 can also be supplied with suspended ladders with wide steps.



### TECHNICAL DATA:

- ▶ Working height: 13.38 m
- ▶ Area of working platform: 1.50 x 2.85 m
- ▶ Permissible live load: 2 kN/m<sup>2</sup> (scaffolding group 3)

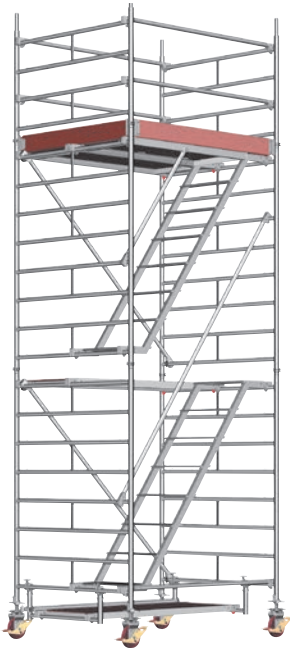


Tower model	Working height [m]	Scaffolding height [m]	Platform height [m]
1402101	3.20	2.43	1.20
1402102	4.20	3.43	2.20
1402103	5.20	4.43	3.20
1402104	6.20	5.43	4.20
1402105	7.20	6.43	5.20
1402106	8.38	7.61	6.38
1402107	9.38	8.61	7.38
1402108	10.38	9.61	8.38
1402109	11.38	10.61	9.38
1402110	12.38	11.61	10.38
1402111	13.38	12.61	11.38

# Uni Comfort

The universal tower with convenient stairway access

The Uni Comfort tower is ideally suited for assembly and maintenance work etc.

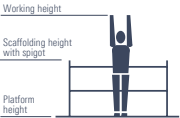


TECHNICAL DATA:

▶ Working height: 14.20 m

▶ Area of working platform: 1.50 x 1.80 m

▶ Permissible live load: 2 kN/m² (scaffolding group 3)

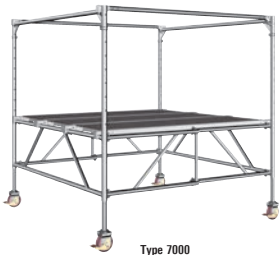


Tower model	Working height [m]	Scaffolding height [m]	Platform height [m]
4201	4.20	3.43	2.20
4202	6.20	5.43	4.20
4203	8.20	7.43	6.20
4204	10.20	9.43	8.20
4205	12.20	11.43	10.20
4206	14.20	13.43	12.20

# Staro rolling tower

The ready-made tower for freedom of movement and a large working area

The Staro rolling tower is the "ready-to-use" tower with a large work surface. It is indispensable for fast work on large ceiling surfaces or for assembling components or installation work underneath the ceiling. The large work surface offers ample freedom of movement and space for storing tools and materials ready to handy.



Type 7000



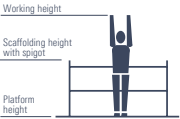
Type 7001  
Includes the additional equipment for use at platform height from 1 m.

TECHNICAL DATA:

▶ Working height: 3.90 m

▶ Area of working platform: 1.95 x 1.95 m

▶ Permissible live load: 1.5 kN/m² (scaffolding group 2)



Tower model	Working height [m]	Scaffolding height [m]	Platform height [m]
7000	2.80 – 3.90*	1.89 – 2.78*	0.80 – 1.90*
7001	2.80 – 3.90	1.89 – 2.78	0.80 – 1.90

\* For a platform height of 1 m and above, an access ladder and 3-part side protection are needed.

# LayPLAN

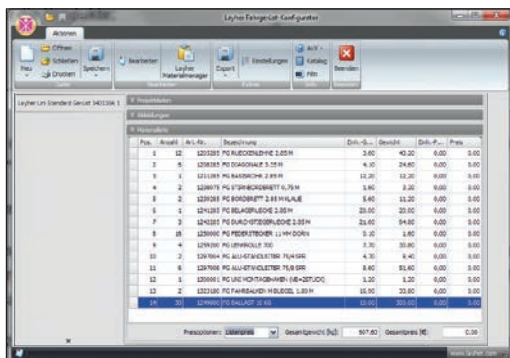
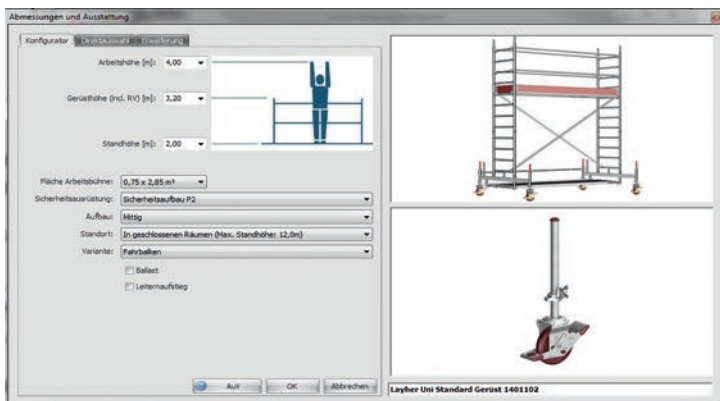
## Rolling tower-configurator



By using this LayPLAN module, it is possible to choose between standard and individual rolling tower solutions – quickly and easily. After entering of working height, the required working space and selection of the equal assembly structure, the program gives you a solution offer with pictures and material lists. Applications with internal ladder access, wall support or console brackets can be chosen – also as structures with mobile beam or stabilizers. All assembly structures according to the user manuals are available.

### YOUR ADVANTAGES

- ▶ Quick planning and selection of the equal rolling tower type. No matter if standard or individual.
- ▶ Download of all user manuals of the Layher rolling towers.
- ▶ Optionally the material list can be generated with or without required ballastings.
- ▶ Single components can be edited, added or deleted from the material list.



LayPLAN Rolling  
Tower Configurator  
**Order now for free:**  
**Ref. No. 6345.700**





Headquarters in Eibensbach



Plant 2 in Gueglingen

**Further information about Layher rolling towers can be obtained from:**

**Wilhelm Layher GmbH & Co KG**  
Scaffolding Grandstands Ladders

Ochsenbacher Strasse 56  
74363 Gueglingen-Eibensbach  
Germany

Post Box 40  
74361 Gueglingen-Eibensbach  
Germany

Telephone +49 (0) 71 35 70-0  
Telefax +49 (0) 71 35 70-2 65  
E-mail [export@layher.com](mailto:export@layher.com)  
[www.layher.com](http://www.layher.com)

**Layher** 

More Possibilities. The Scaffolding System.